

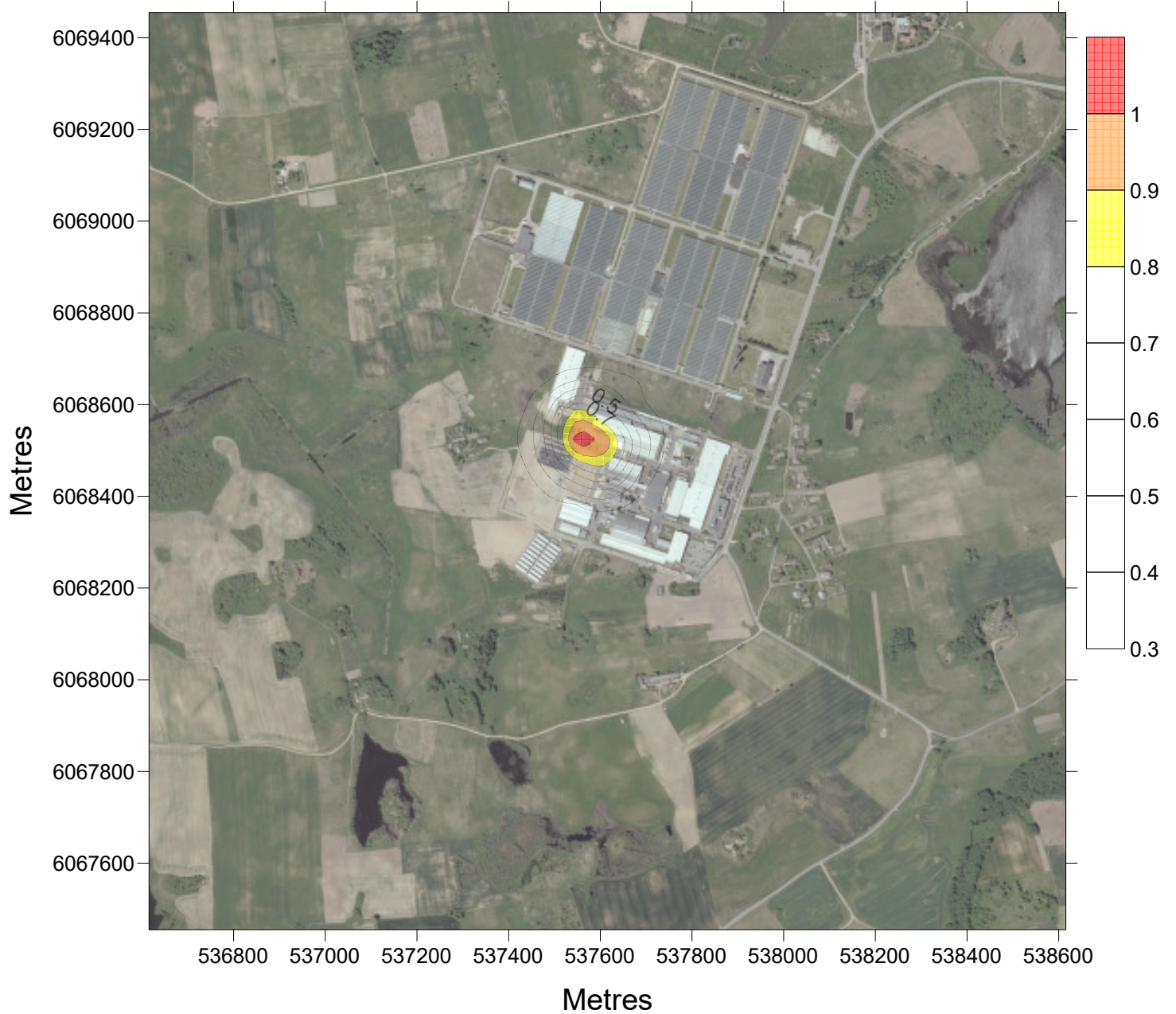
**P 98.50µg/m<sup>3</sup> ACETONAS**

**All sourc Z=1.5m - 1hr**



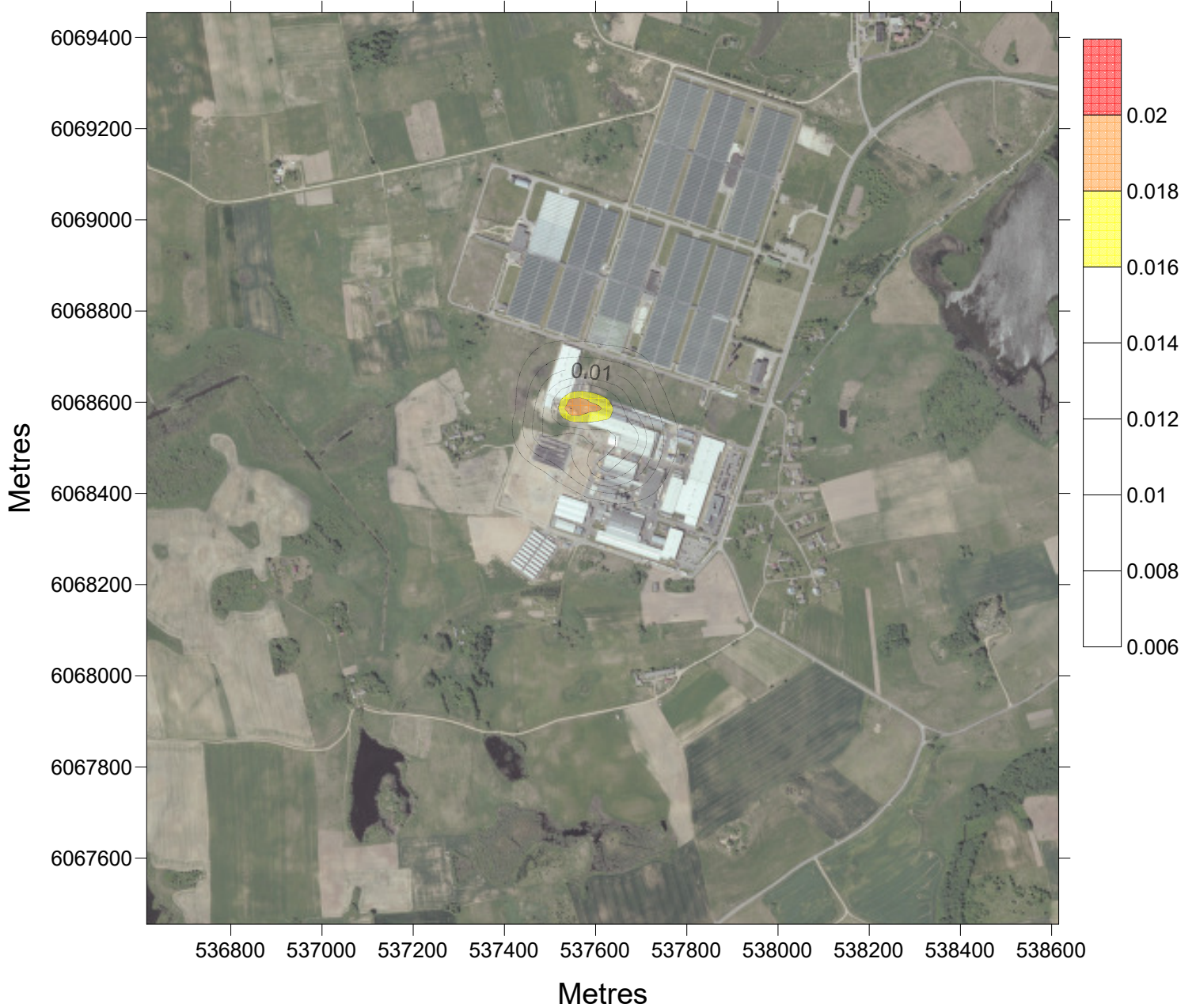
**P100.00 $\mu\text{g}/\text{m}^3$  ACETONAS**

**All sourc Z=1.5m - 24hrs**



**P 98.50 $\mu\text{g}/\text{m}^3$  BUTANONAS**

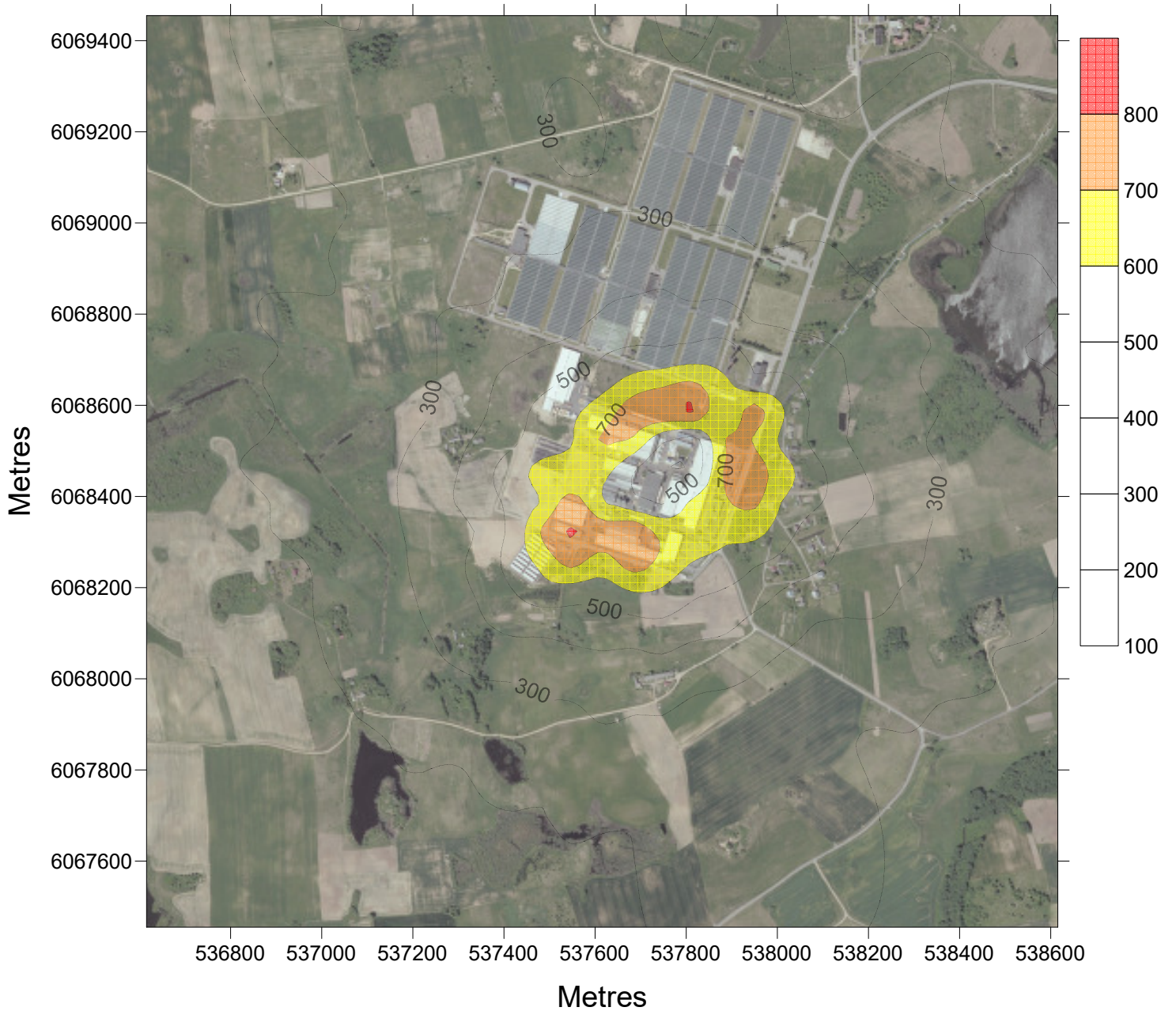
**All sourc Z=1.5m - 1hr**



**P100.00 $\mu\text{g}/\text{m}^3$  CO**

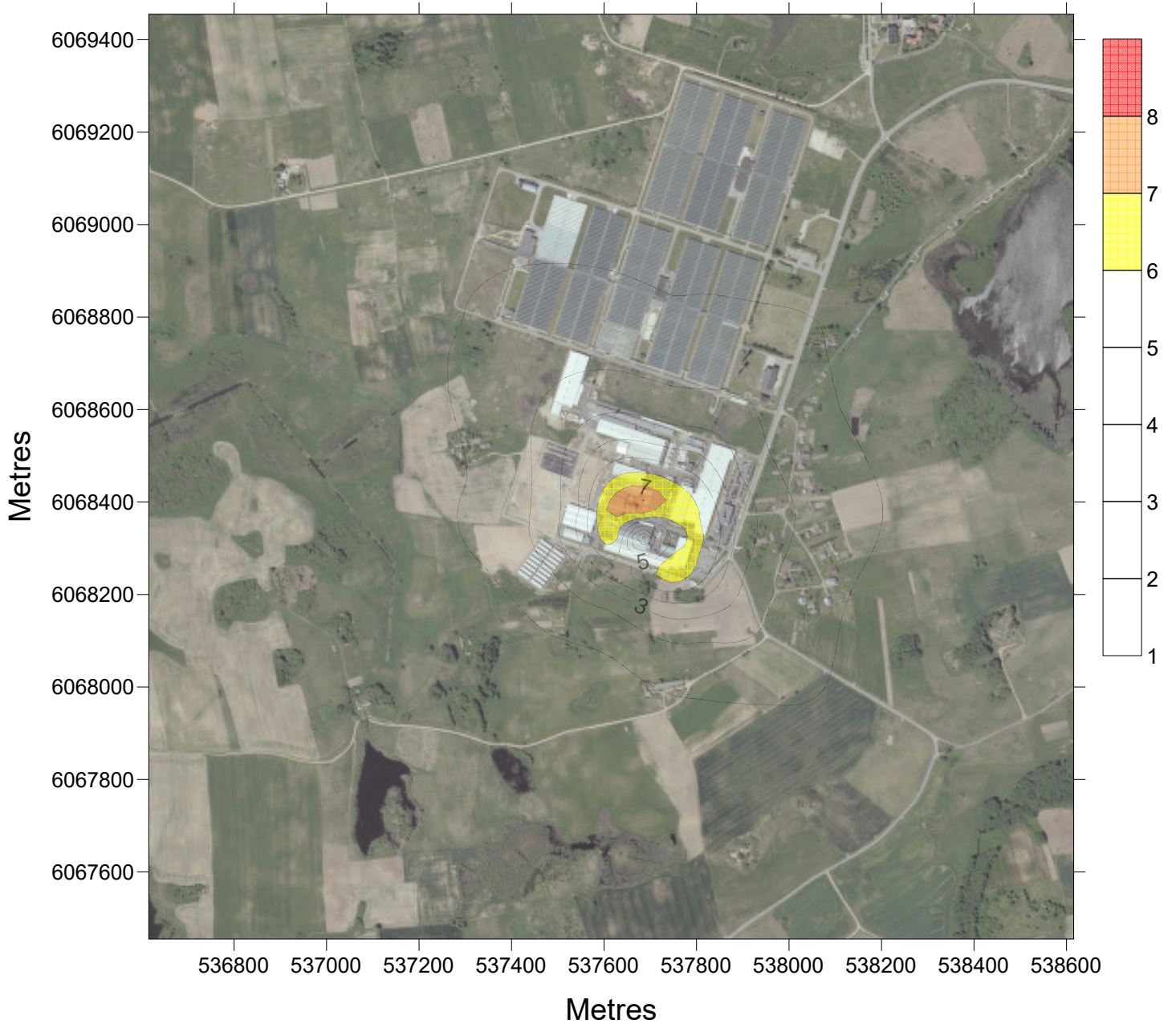
**be fono**

**Z=1.5m r 8hrs**

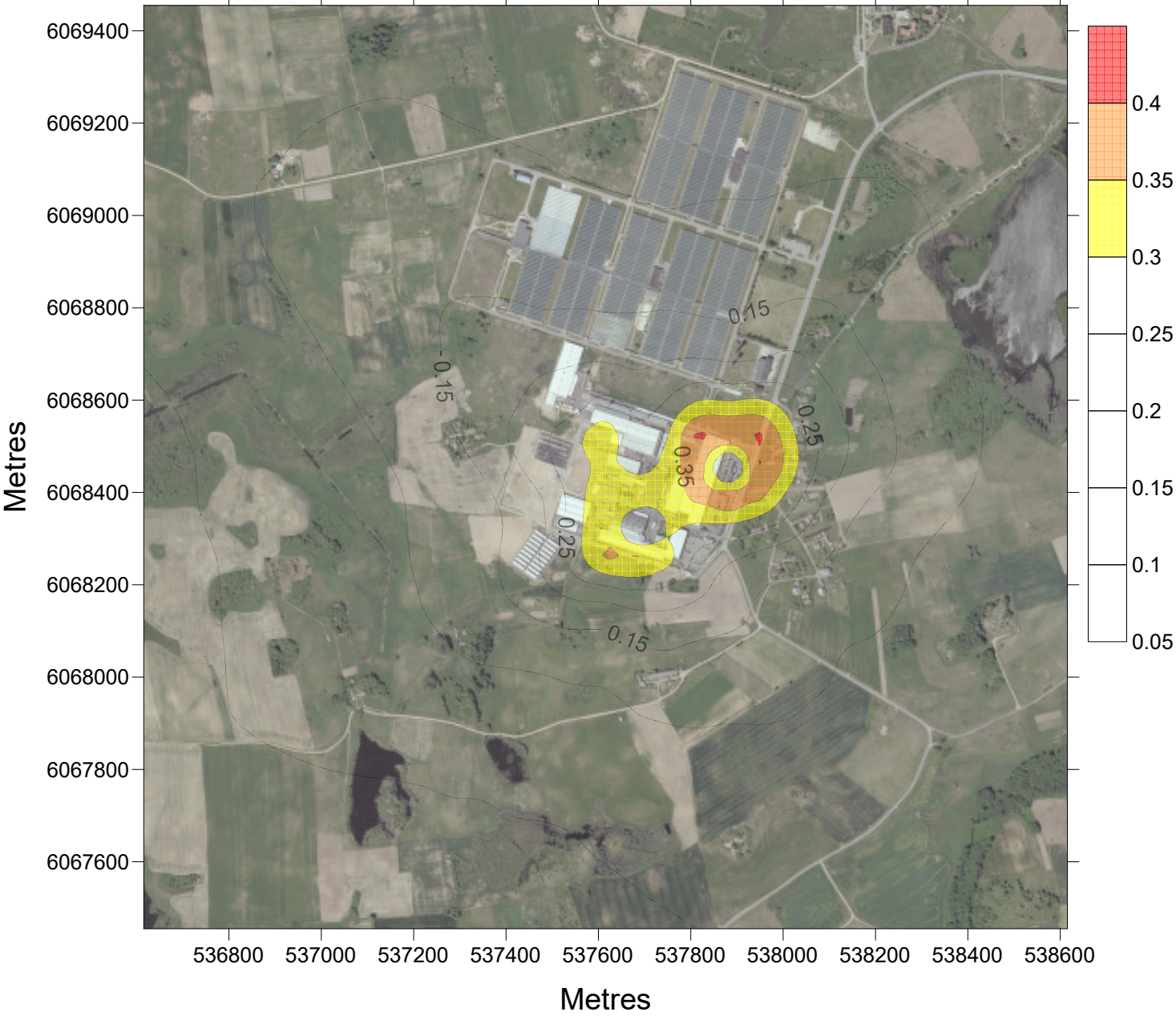


**P 98.50µg/m<sup>3</sup> ETANOLIS**

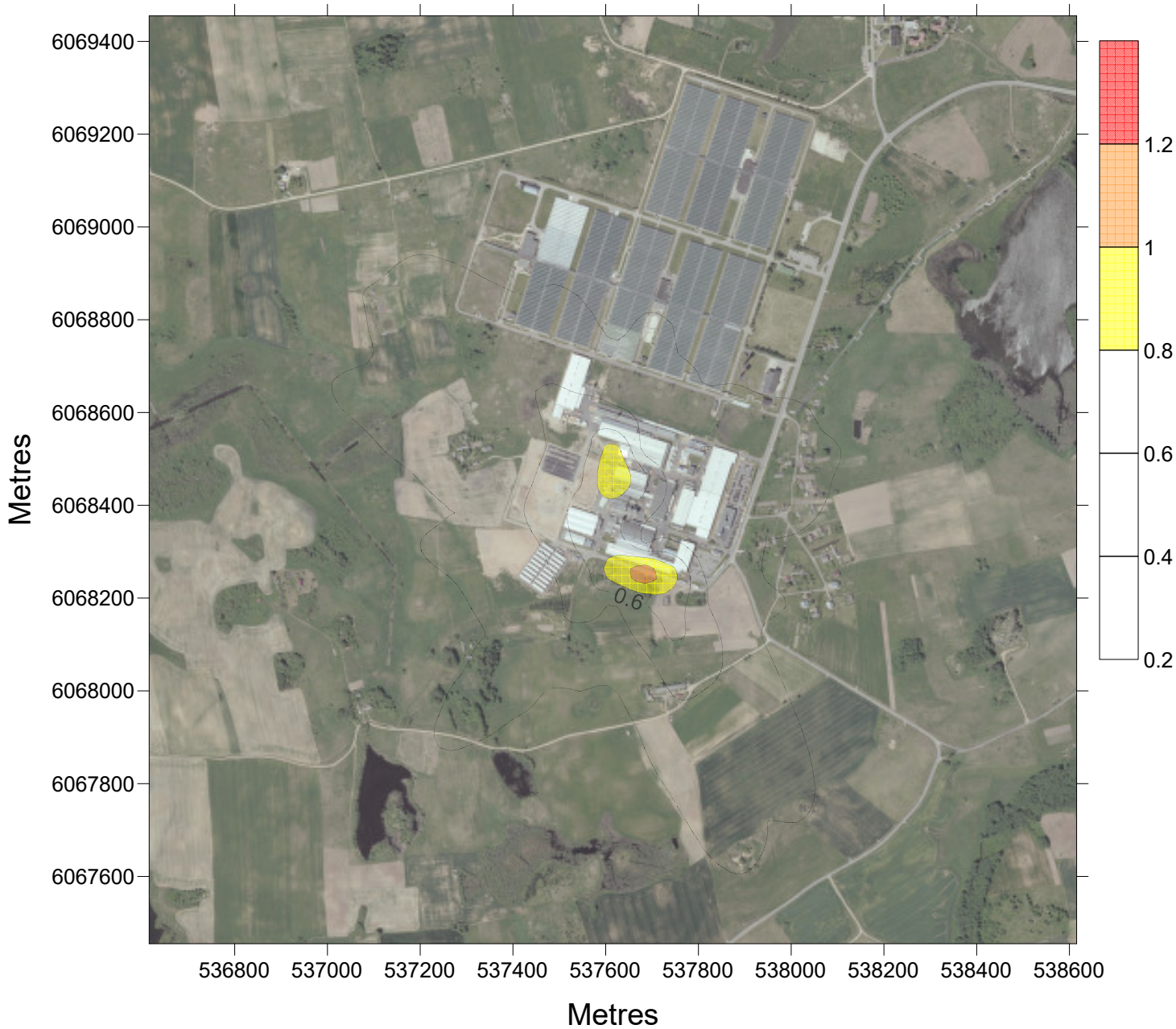
**All sourc Z=1.5m - 1hr**



**P 98.50 $\mu\text{g}/\text{m}^3$  FORMALDEHIDAS be fono Z=1.5m - 1hr**

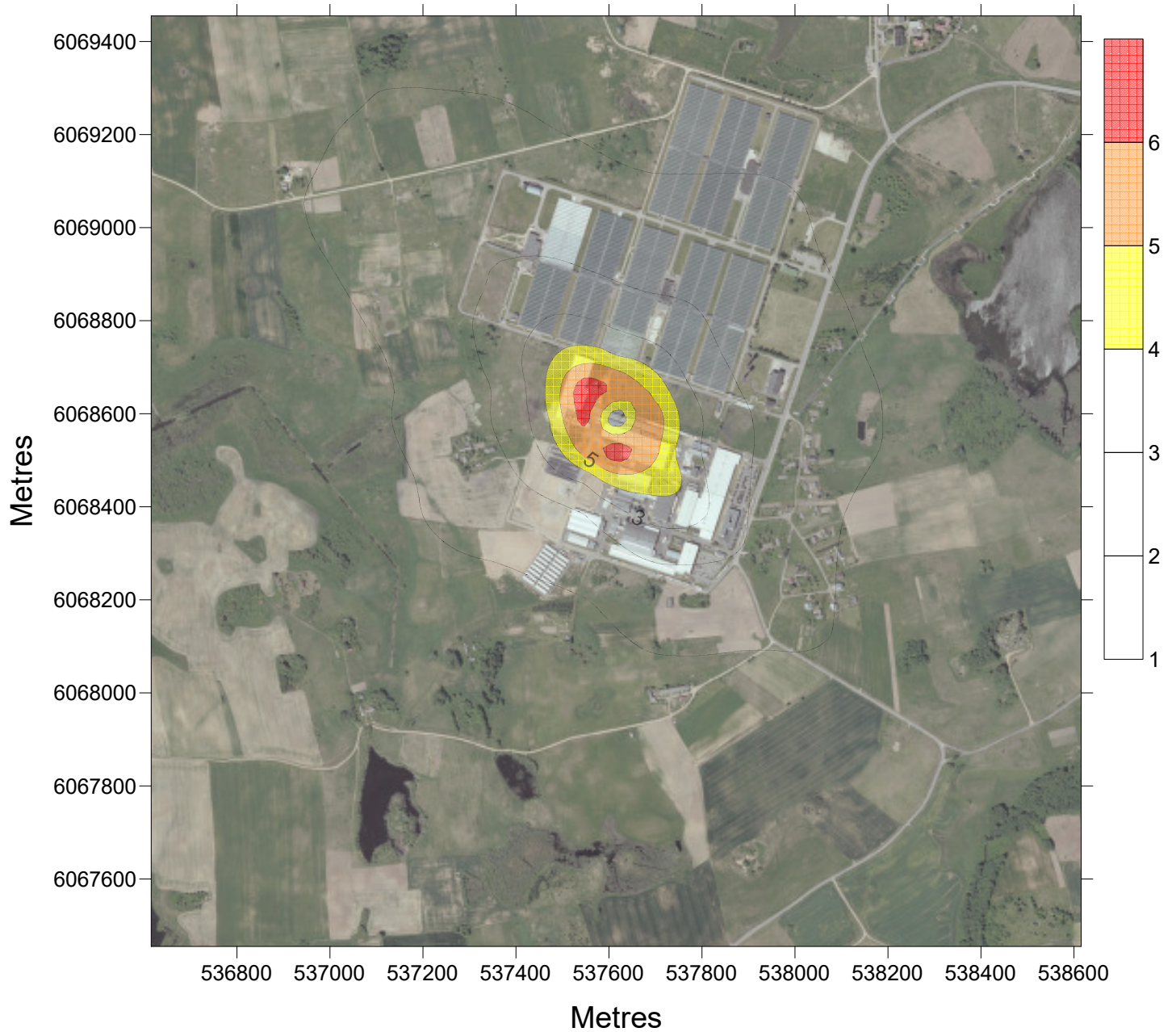


**P100.00 $\mu\text{g}/\text{m}^3$  FORMALDEHIDAS be fono Z=1.5m - 24hrs**



**P 98.50µg/m<sup>3</sup> IZOPROPANOLIS**

**All sourc Z=1.5m - 1hr**

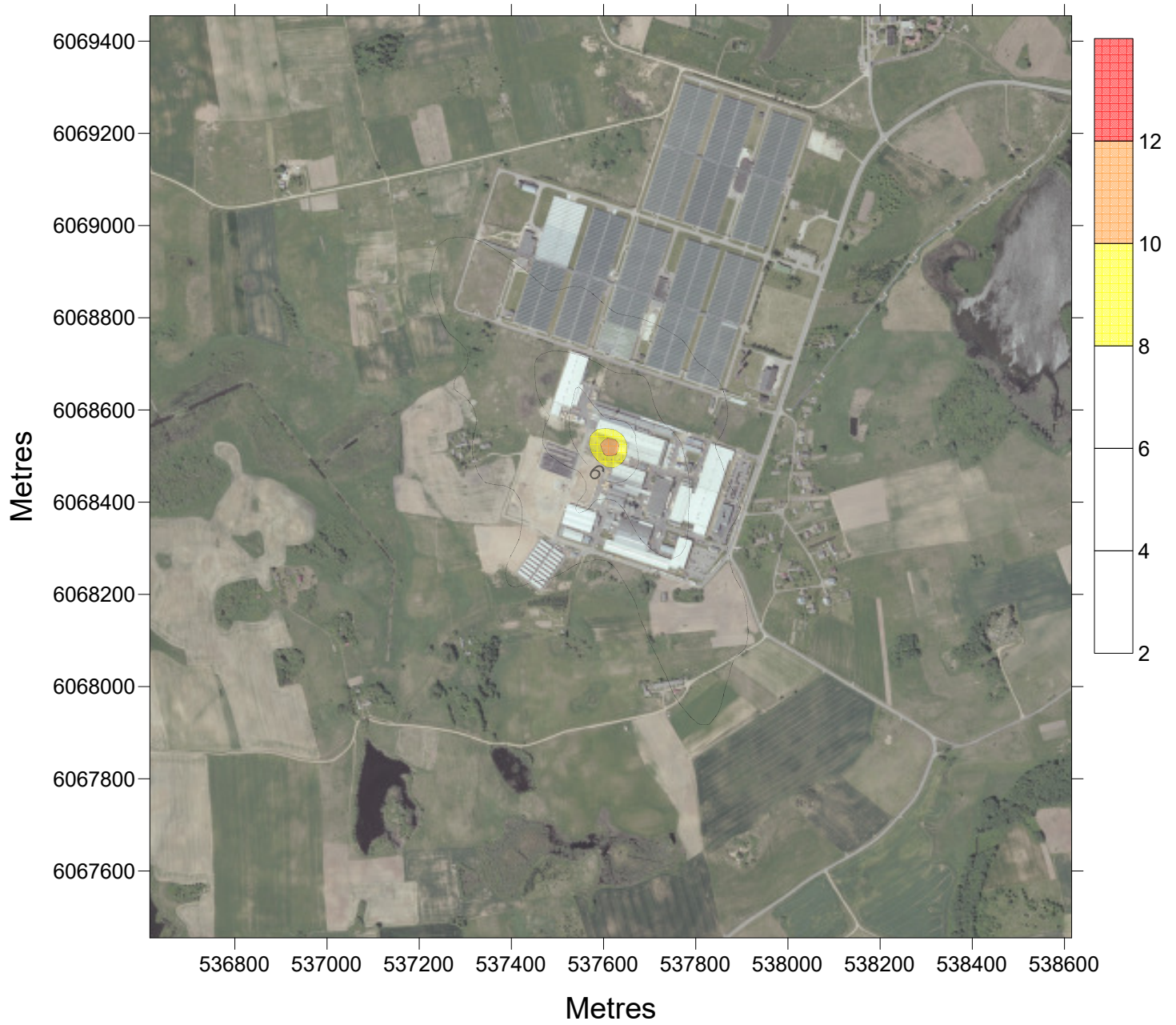




**P100.00 $\mu\text{g}/\text{m}^3$  IZOPROPANOLIS**

**All sourc**

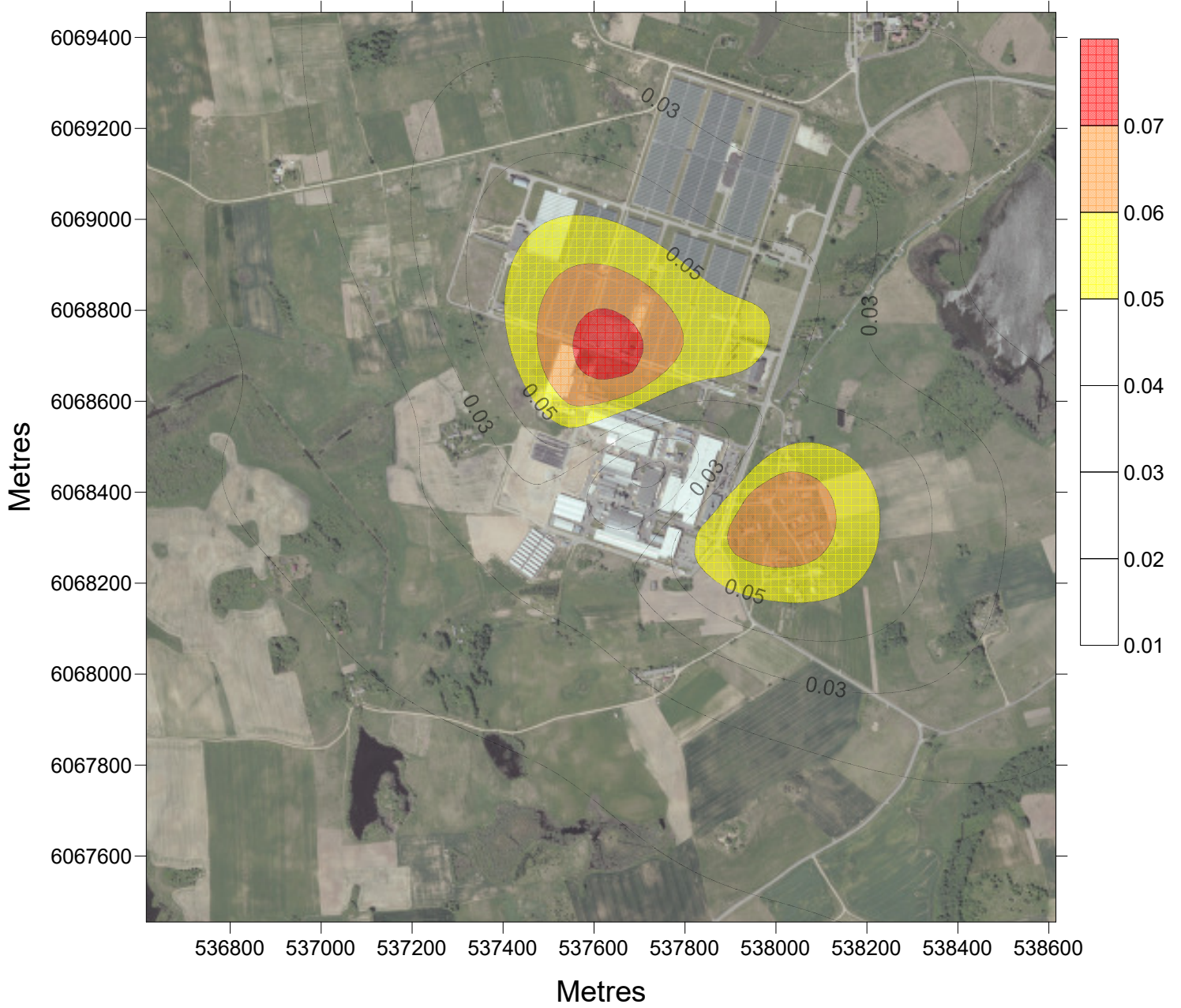
**Z=1.5m - 24hrs**



**LTConc  $\mu\text{g}/\text{m}^3$  PM2.5**

**be fono**

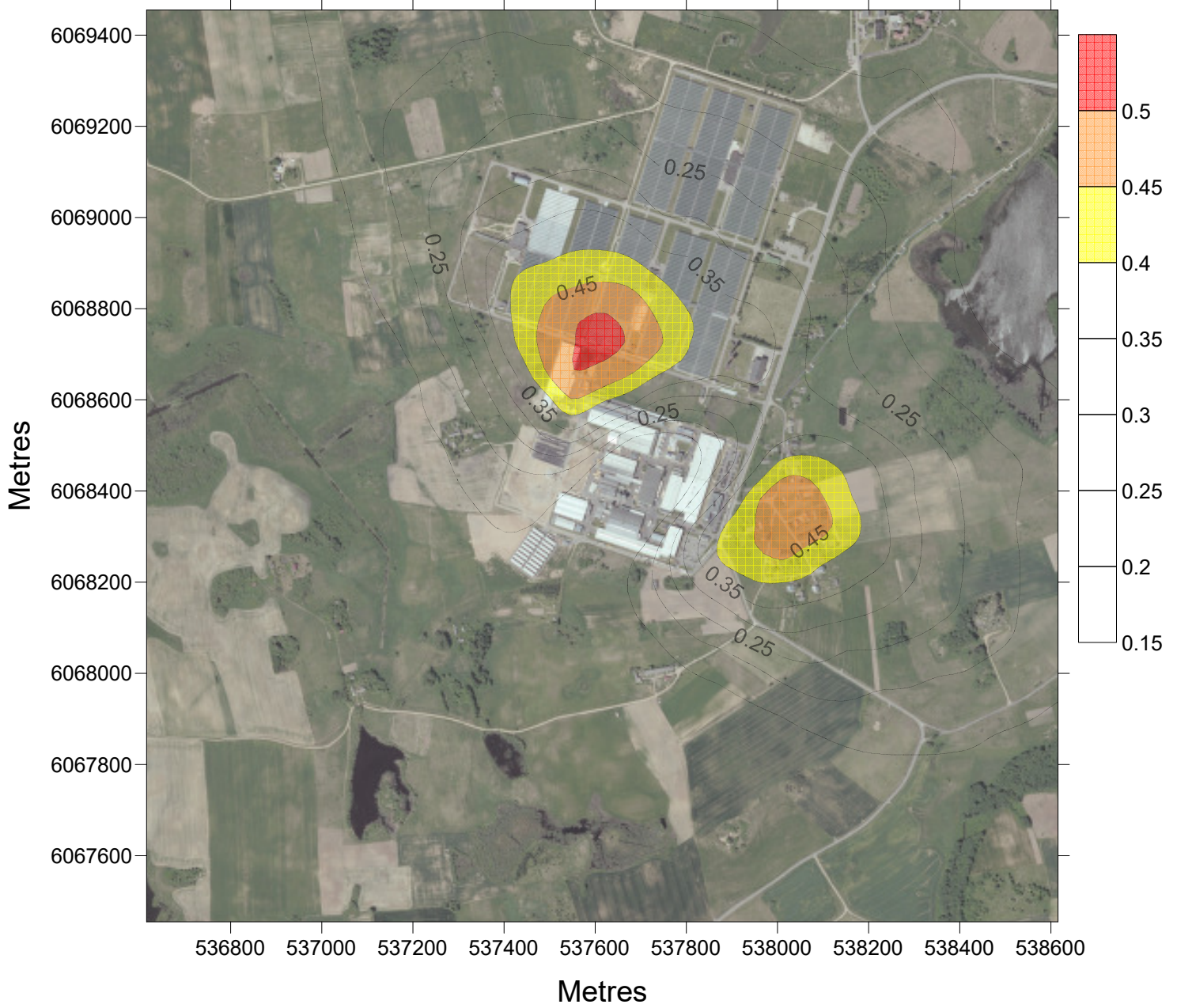
**Z=1.5m - 1hr**



**P 90.40 $\mu\text{g}/\text{m}^3$  PM10**

**be fono**

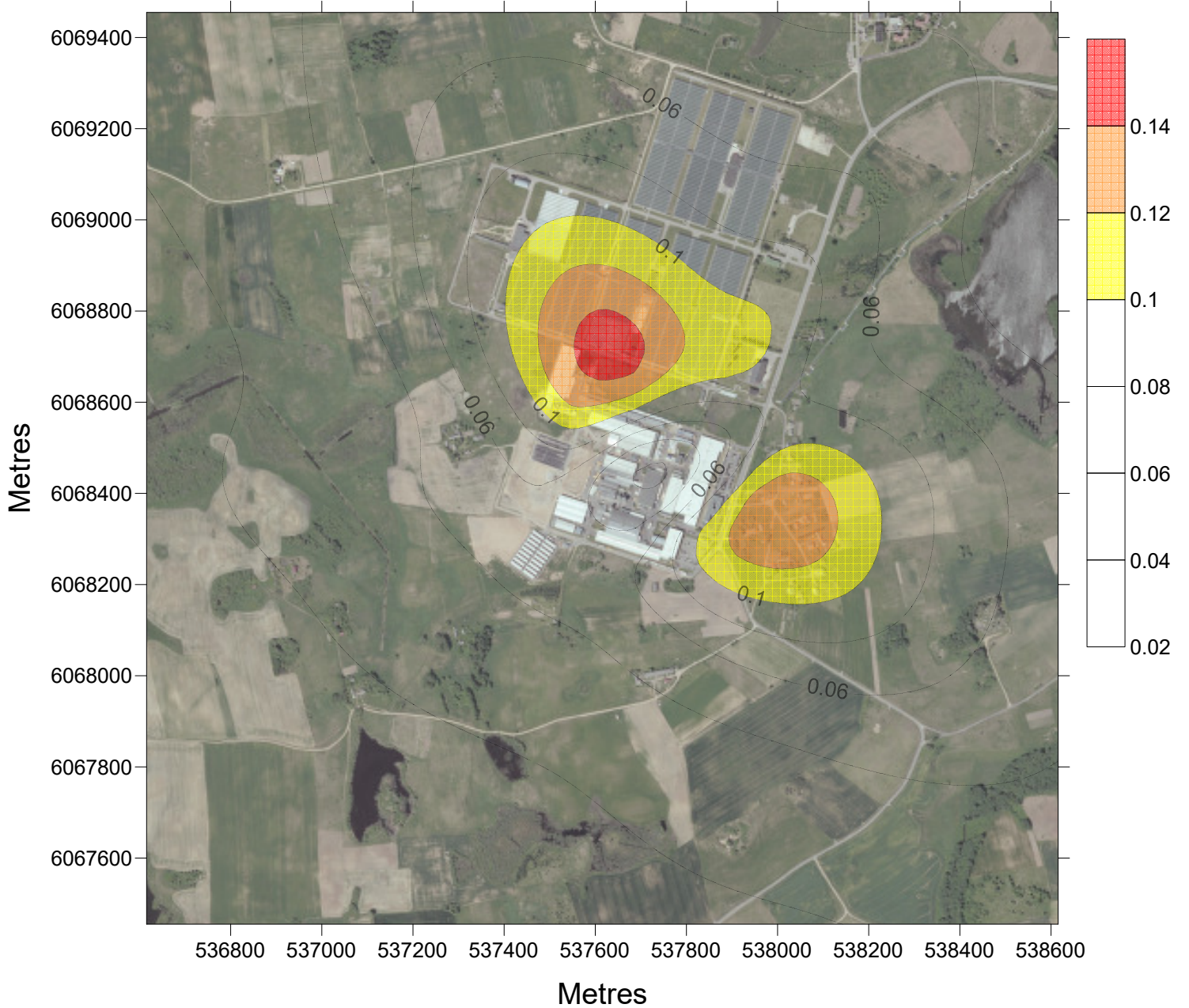
**Z=1.5m - 24hrs**



**LTConc  $\mu\text{g}/\text{m}^3$  PM10**

**be fono**

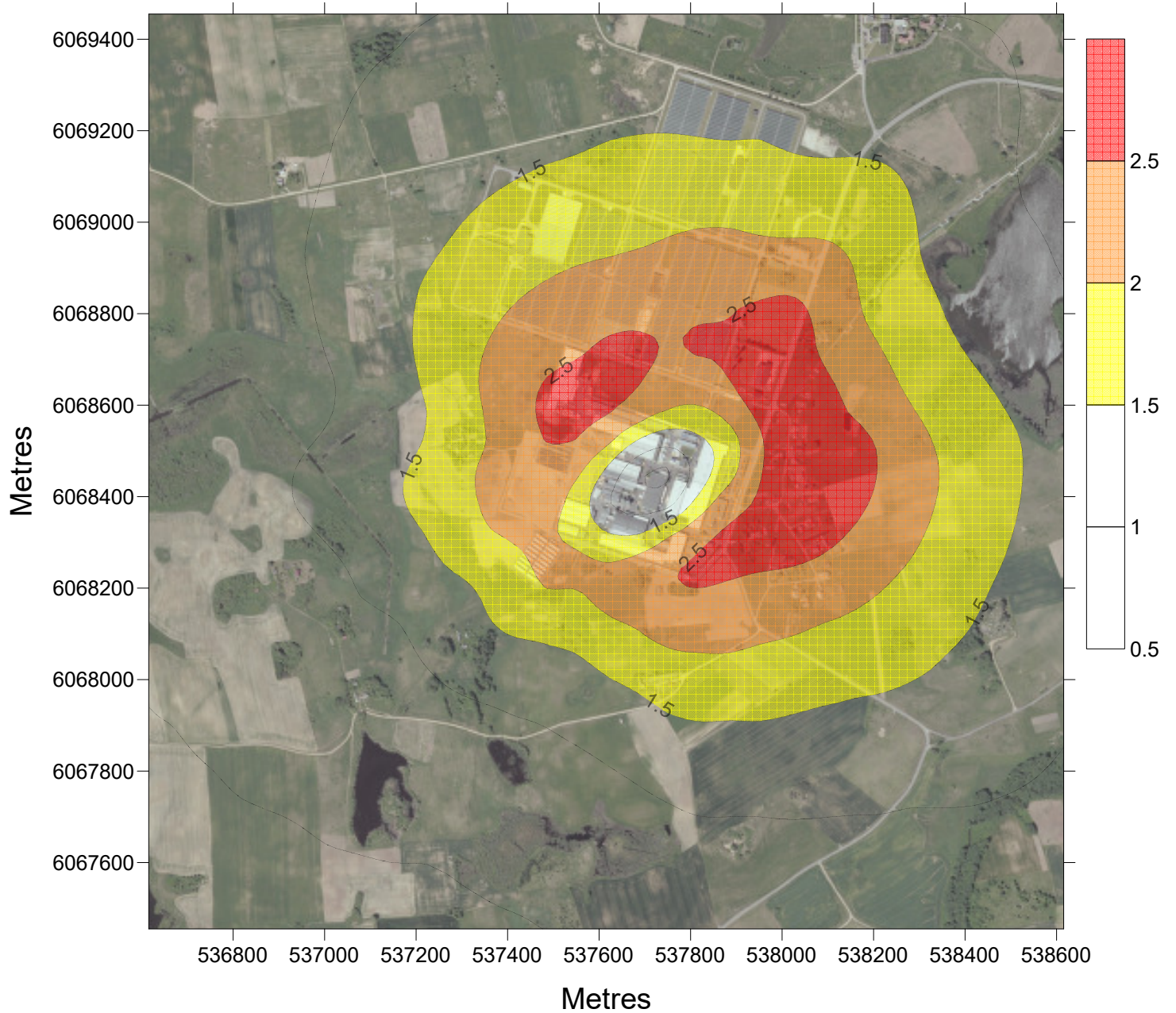
**Z=1.5m - 1hr**



**P 98.50 $\mu\text{g}/\text{m}^3$  PM**

**be fono**

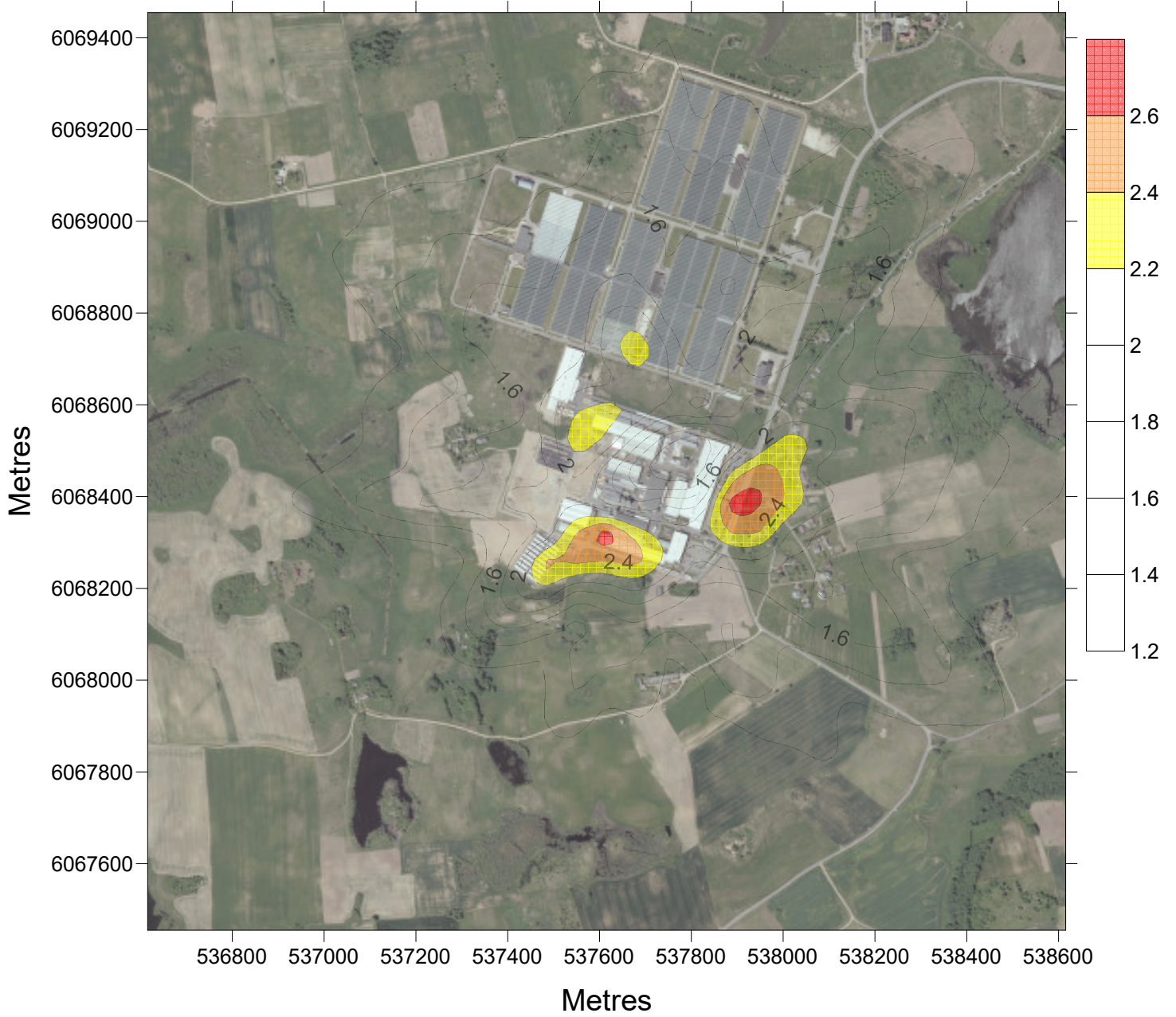
**Z=1.5m - 1hr**



**P100.00 $\mu\text{g}/\text{m}^3$  PM**

**be fono**

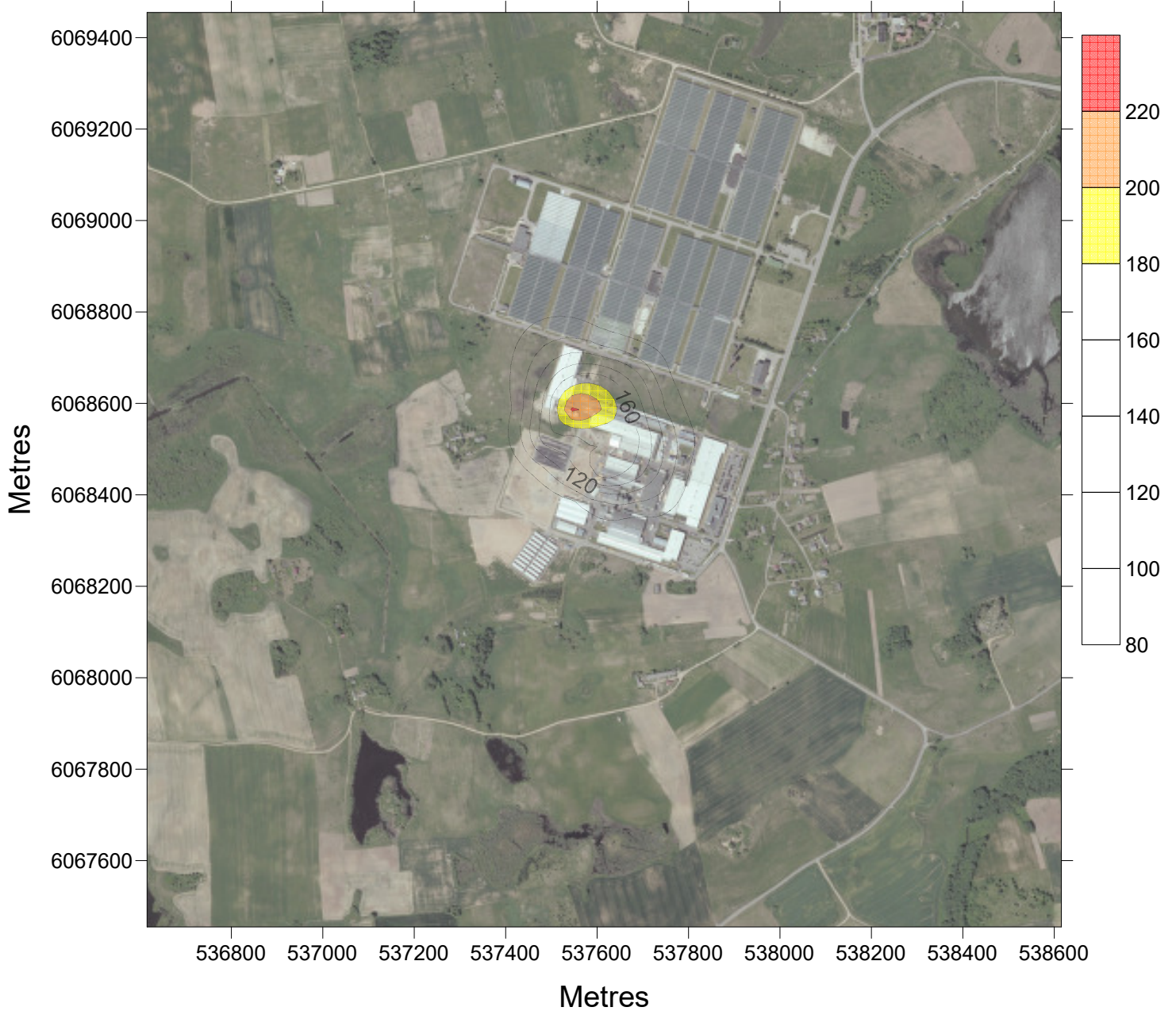
**Z=1.5m - 24hrs**



**P 98.50 $\mu\text{g}/\text{m}^3$  VOC**

**be fono**

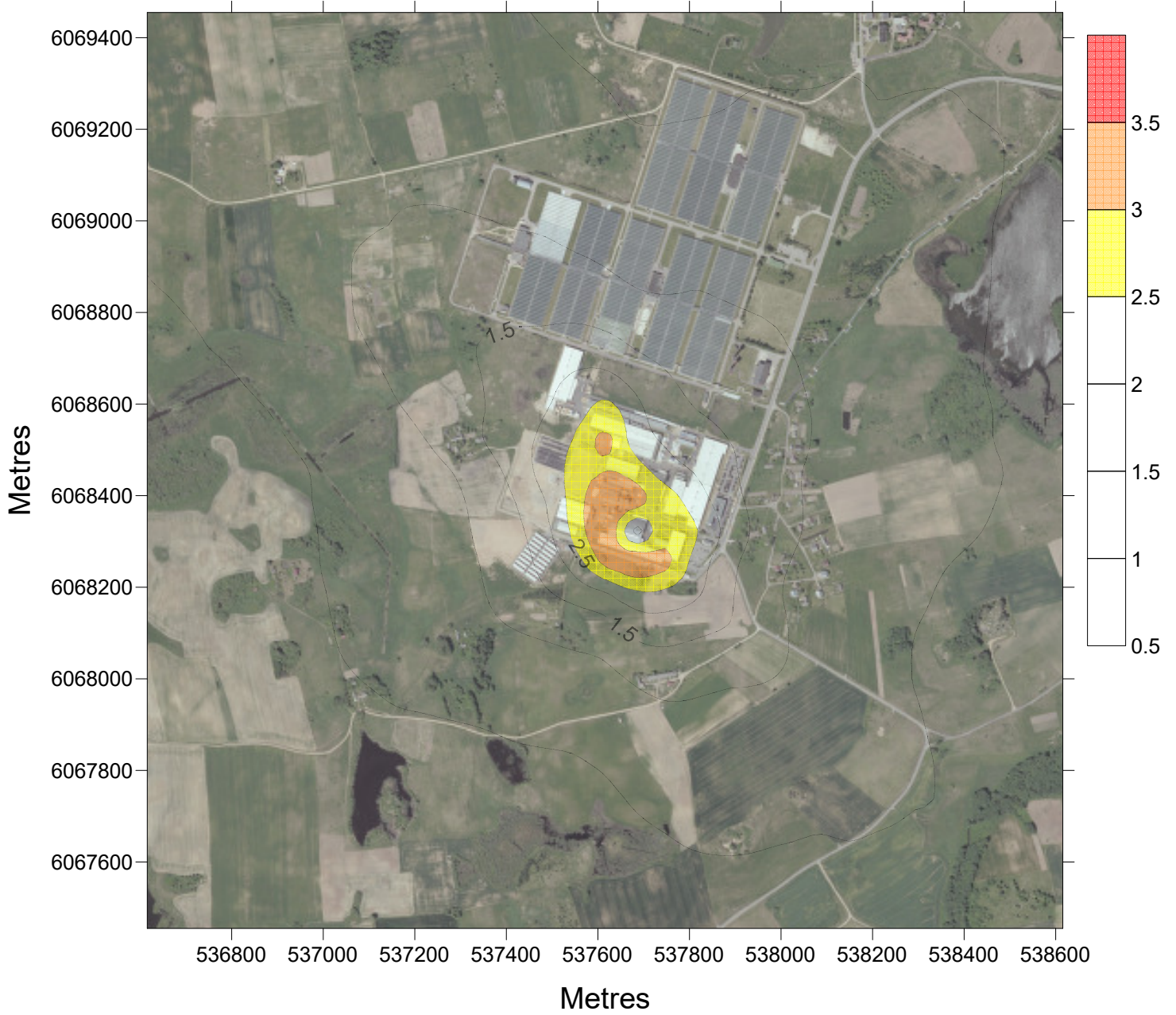
**Z=1.5m - 1hr**



**P 98.50µg/m<sup>3</sup> METANOLIS**

**be fono**

**Z=1.5m - 1hr**

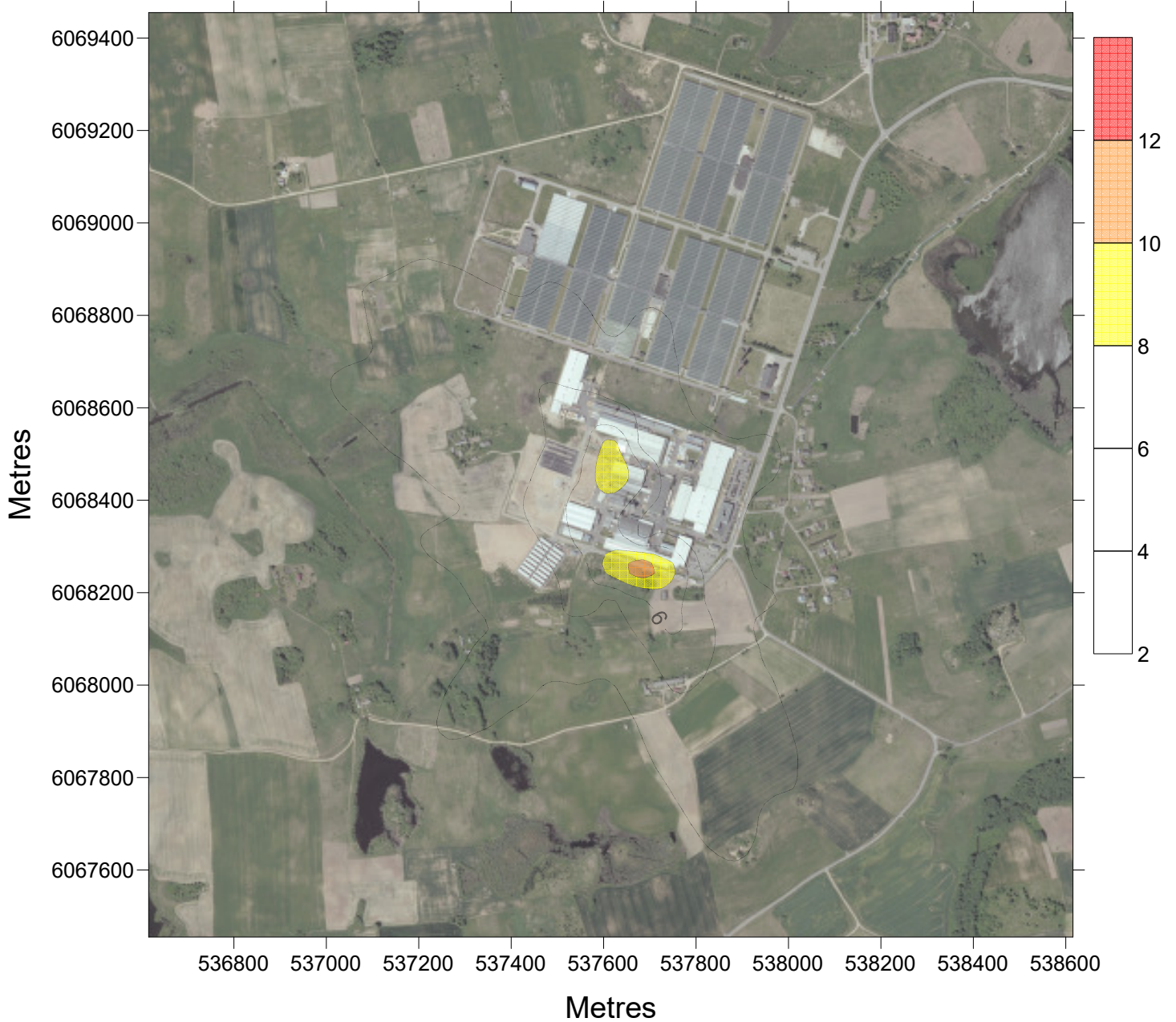




**P100.00 $\mu\text{g}/\text{m}^3$  METANOLIS**

**be fono**

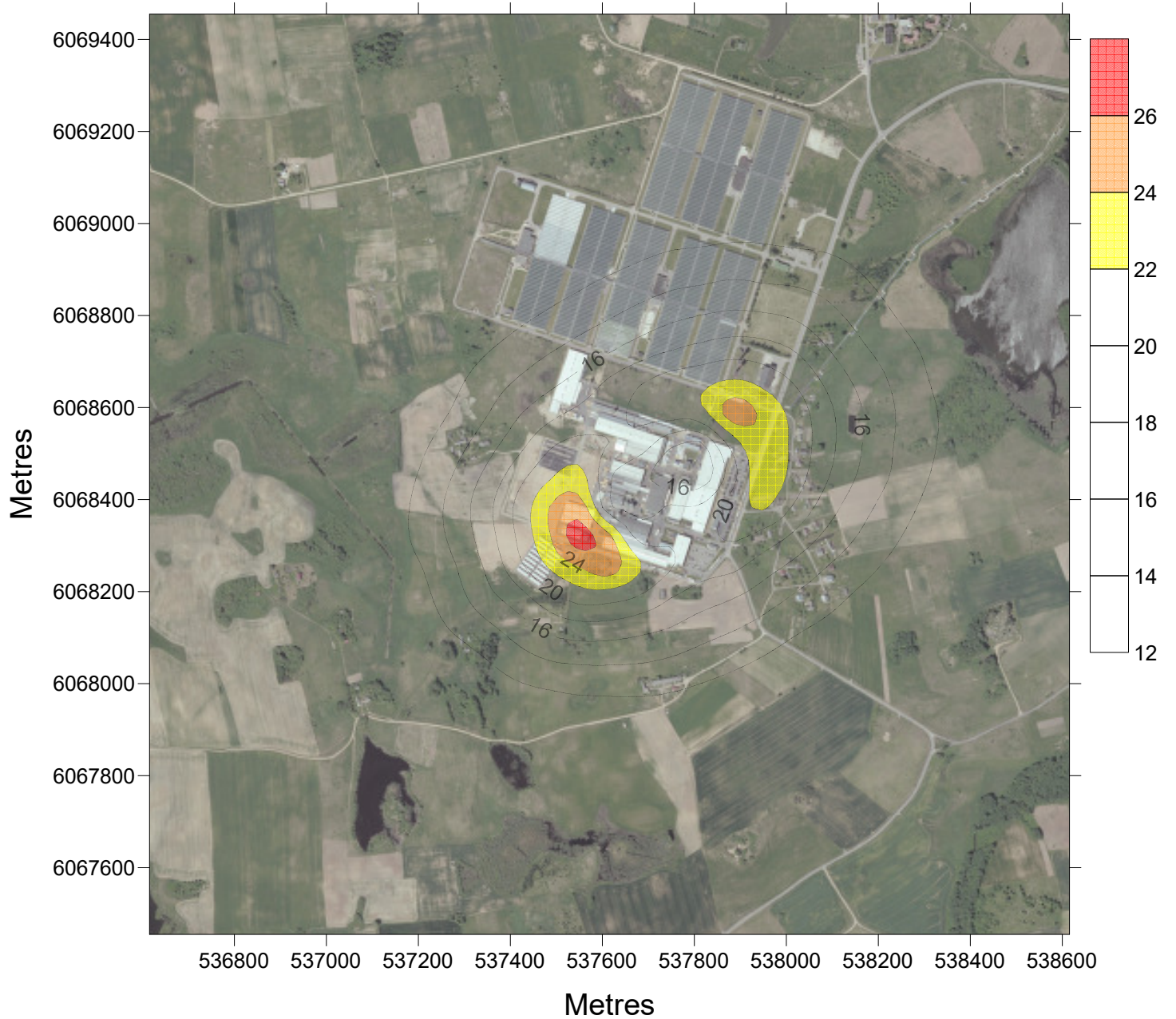
**Z=1.5m - 24hrs**



**P 99.80 $\mu\text{g}/\text{m}^3$  NOx**

**be fono**

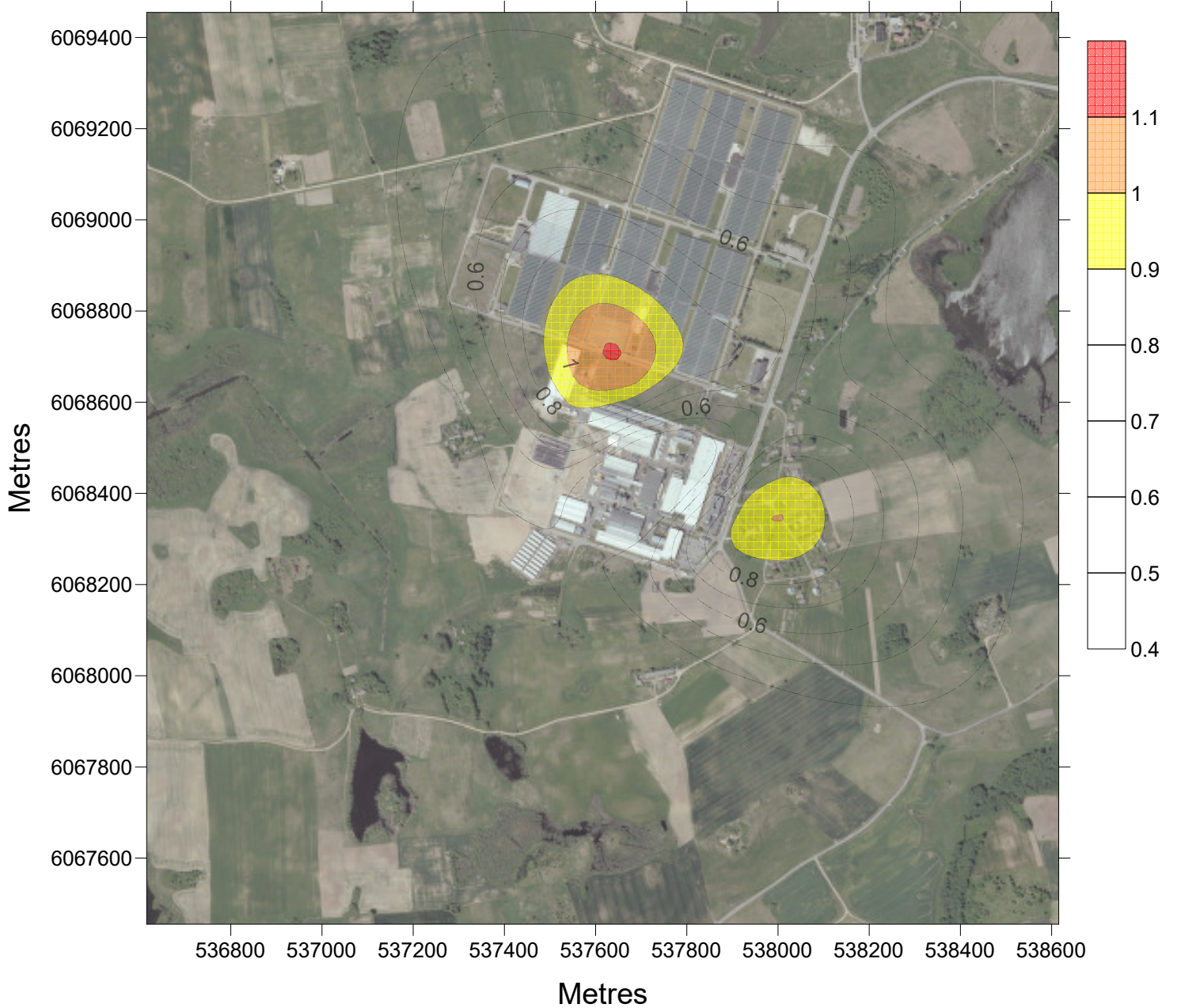
**Z=1.5m - 1hr**



LTConc  $\mu\text{g}/\text{m}^3$  NOx

be fono

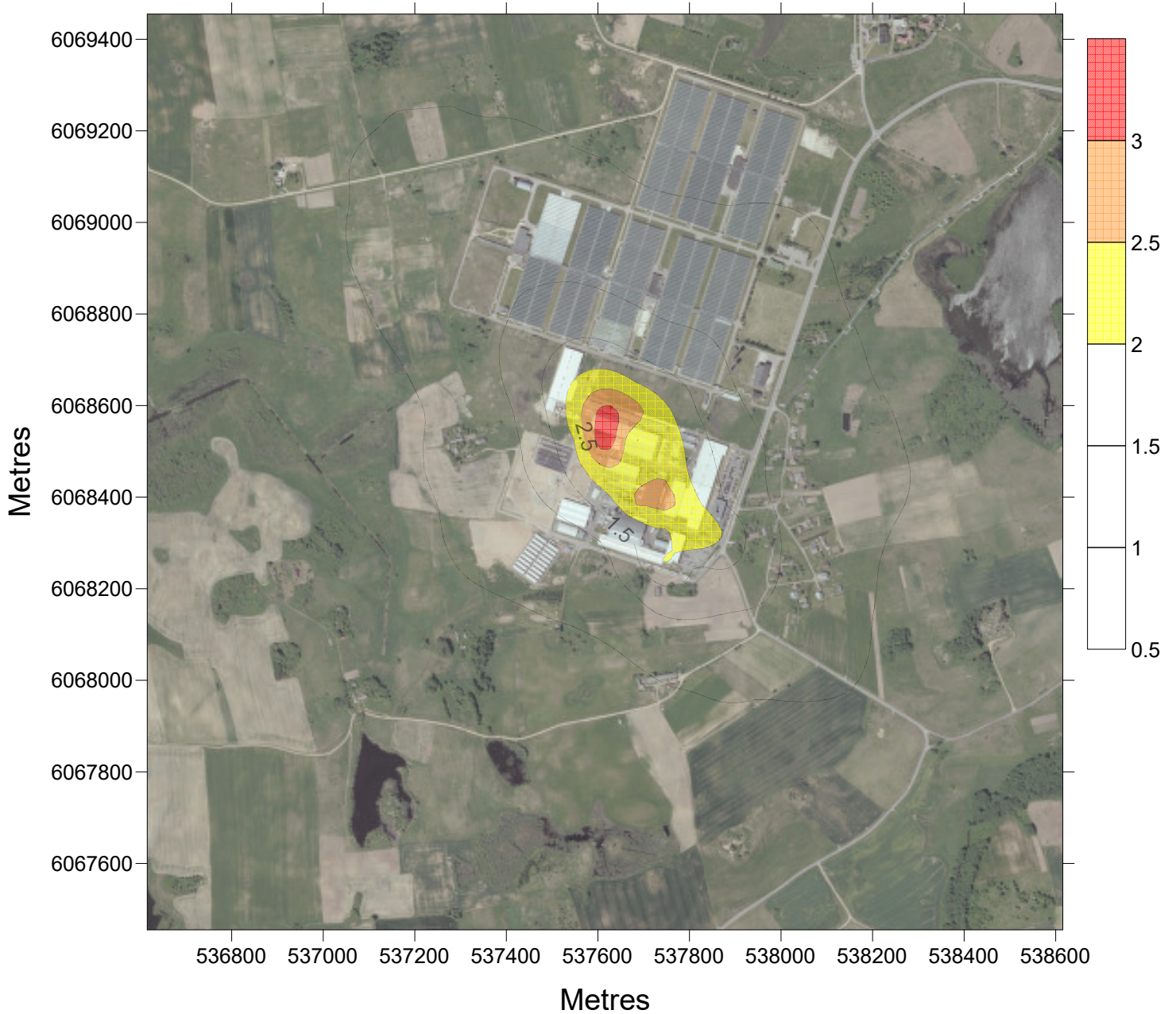
Z=1.5m - 1hr



**P 98.50 $\mu\text{g}/\text{m}^3$  H<sub>2</sub>SO<sub>4</sub>**

**be fono**

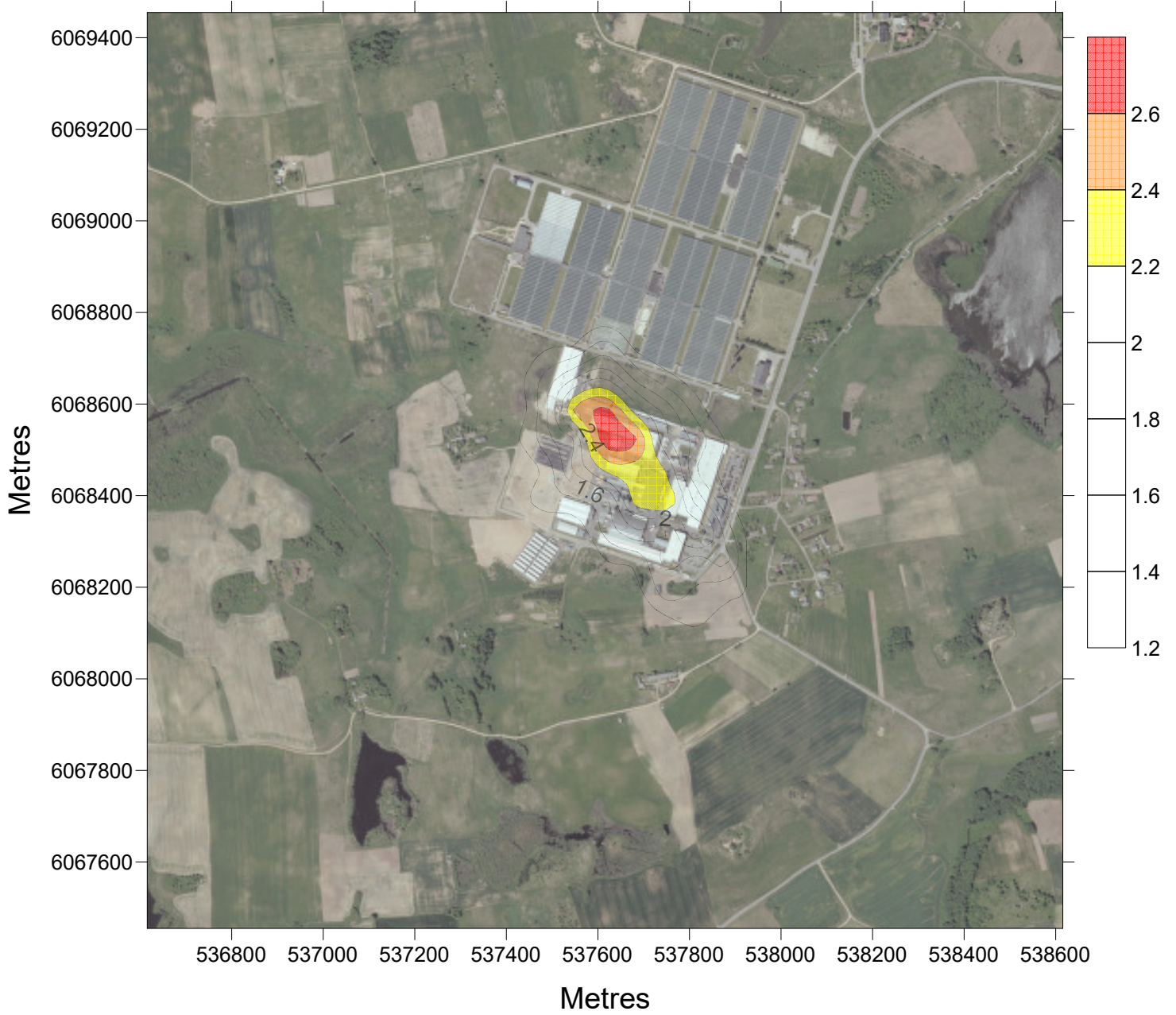
**Z=1.5m - 1hr**



**P100.00 $\mu\text{g}/\text{m}^3$  H<sub>2</sub>SO<sub>4</sub>**

**be fono**

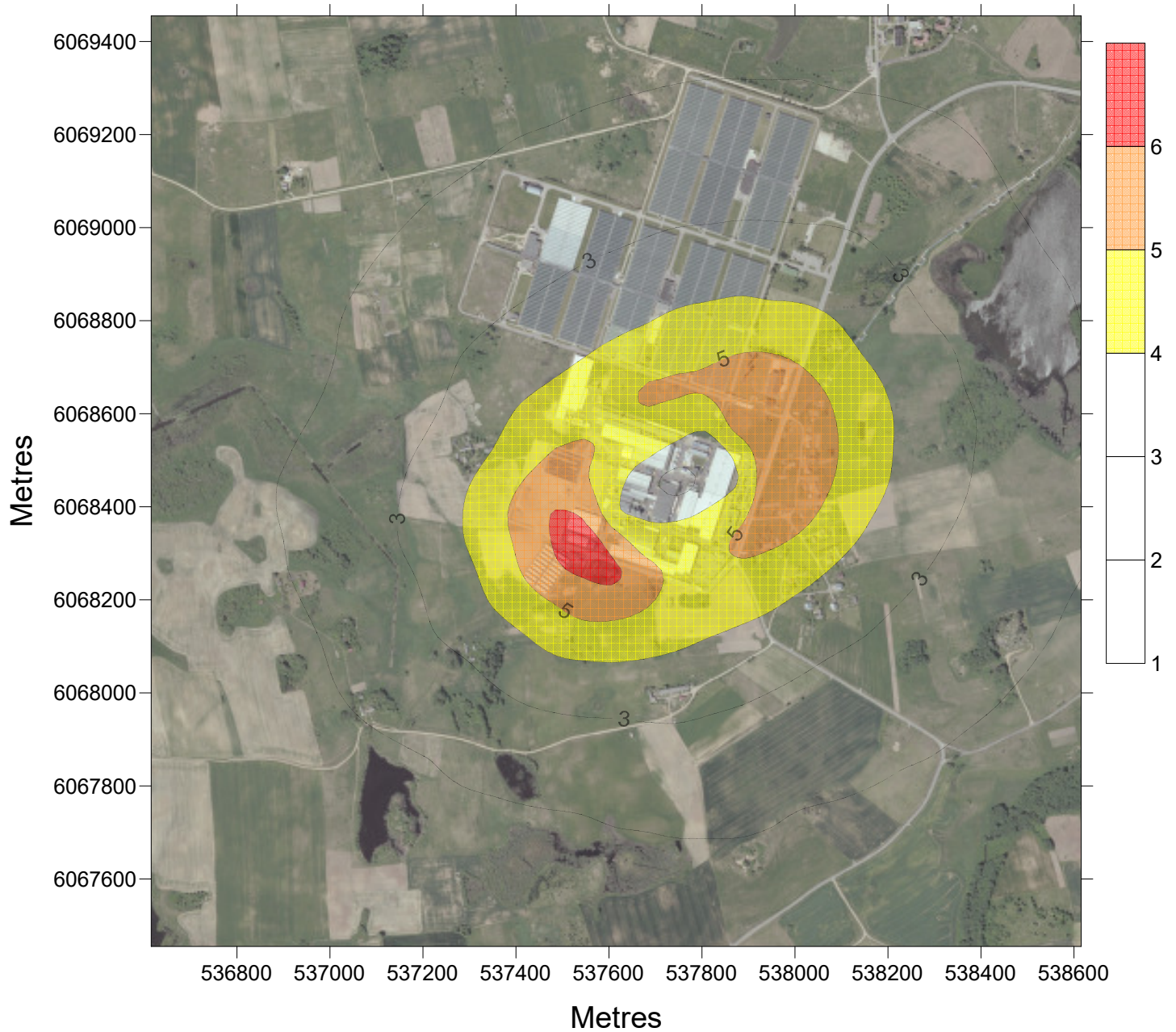
**Z=1.5m - 24hrs**



**P 99.70 $\mu\text{g}/\text{m}^3$  SO<sub>2</sub>**

**be fono**

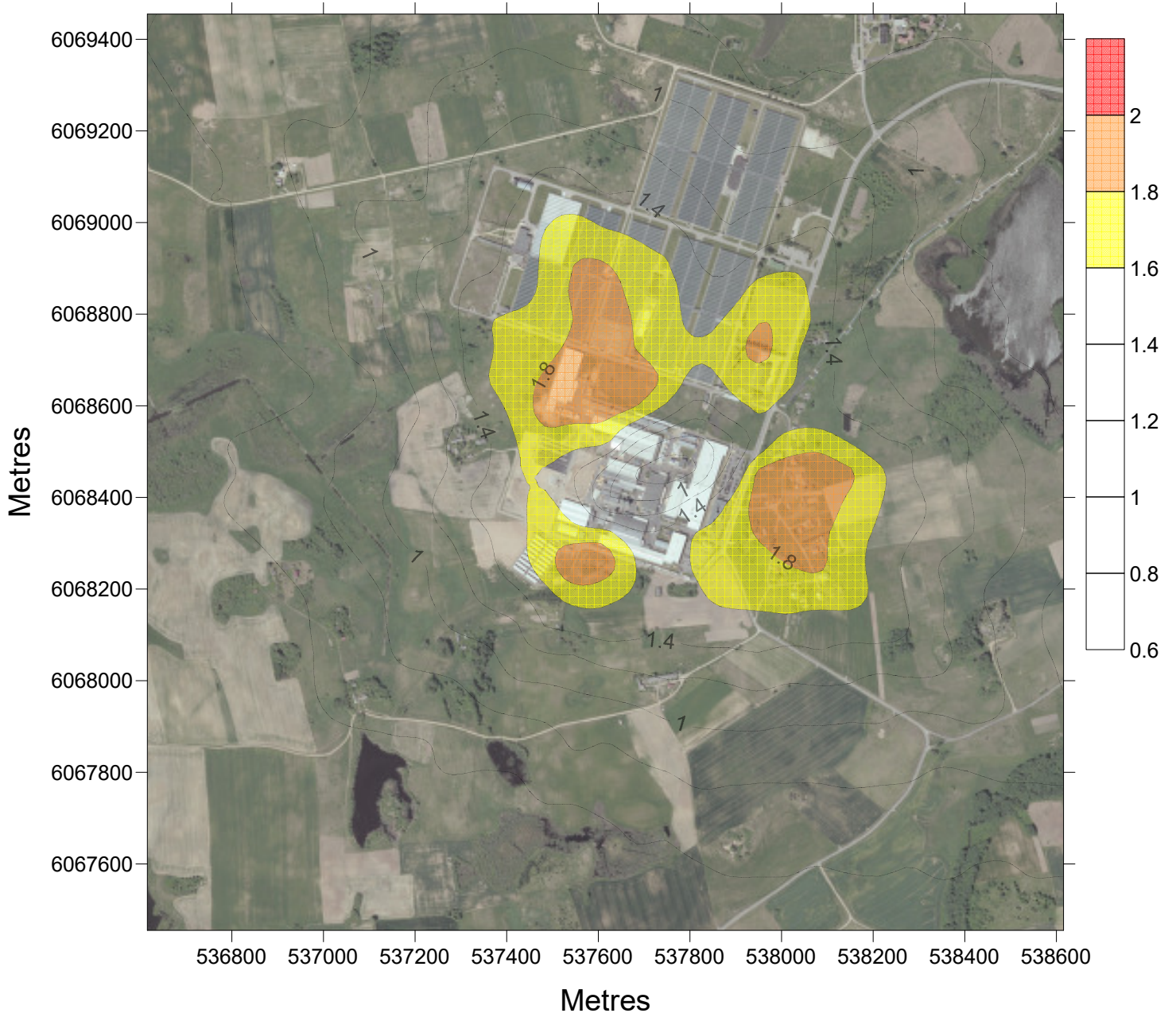
**Z=1.5m - 1hr**



**P 99.20 $\mu\text{g}/\text{m}^3$  SO2**

**be fono**

**Z=1.5m - 24hrs**



**P 98.50 $\mu\text{g}/\text{m}^3$  TRIETILAMINAS be fono Z=1.5m - 1hr**





**P100.00 $\mu\text{g}/\text{m}^3$  TRIETILAMINAS be fono Z=1.5m - 24hrs**

